

LET'S DO SOMETHING
EXTRAORDINARY TOGETHER



ADMISSIONS INFORMATION



LOMAS CAMPUS



Welcome

The Peterson Schools is a private, international, non-profit school that offers personal and fully bilingual co-education with four campuses in Mexico City: Cuajimalpa, Lomas, Paseo, and Pedregal with more than 1,850 students ranging from preschool to high school.

Our institution has always been at the forefront of education. Since 1965, we pioneered one of the first Montessori English preschools in Mexico. Now the oldest, the Peterson Schools have always been focused on offering the best teaching methods for our students.

Our philosophy is based on the development of the talents and abilities of our students through a holistic education and innovative curriculum, incorporated by the educational authorities of Mexico, as well as accredited by agencies in the United States and United Kingdom.



Mission

A community that inspires passion for learning and life.

Vision

To be an empowered, self directed, personalized educational environment.

Values





Lomas Campus

Founded in 1965, it is the oldest campus of the Peterson Schools. The school offers a preschool education ranging from Babies' Room to Pre-First.

“My child comes home from school with newly developed motor skills and an age-appropriate independence that makes me certain that we’ve picked the best school for her”.

—Tania Block, preschool parent.



Academic Information

Preschool Infant Community from 18 months and Children’s House

The Montessori environment involves grouping children of different ages in the same classroom, to help them develop mentoring skills among students and encouraging leadership. This philosophy has designed materials that provide a hands-on approach to learning. Each child works with self-selected material guided by their intrinsic motivation, according to their age and unique characteristics, carefully supervised by a certificated Montessori guide.

Students learn through four different areas: practical life, sensorial learning, mathematics, and language/culture. Montessori learning is based on four fundamental pillars : seeking a sense of order in the world, coordination, on-task concentration, and repetition of a successful task. They learn at their own pace under an individual learning plan to develop self esteem and independence.

Besides all academic classes being in English, we offer daily oral English classes given by a specialized English teacher to consolidate pronunciation and language fluency.



“We help children to be independent
lifelong learners”.

—Julia Cervantes, Montessori guide.

Pre- First Elementary

Pre-First is a year of transition from preschool to elementary at the Peterson Schools. The importance of this grade is that students develop strong English language skills to solidify their bilingual education later in elementary. All subjects are delivered in English. We follow a constructivist educational model, which is a method that is based on the idea that children actively construct and develop their own knowledge through curiosity, research, and collaborative work.

In this grade we are aligned to the Common Core Standards, an educational initiative that details what students should know in the English Language Arts and Mathematics at the end of a school grade. Additionally, our whole elementary program is led by the IPC (International Primary Curriculum). It is a comprehensive, thematic, creative curriculum with a clear process of learning and with specific set goals for international mindedness. One of the main core ideals is personal learning based on the pillars of cooperation, communication, thoughtfulness, respect, resilience, and morality.

Besides our academic curriculum, we offer a holistic education with additional classes such as music, art, and dance.





Psychopedagogy

This department leads the Peterson Schools' Values Program through activities suitable for a wide variety of ages. The department works closely with students and their parents to assist them in enhancing their overall progress. The department coordinates the classes related to the promotion of multidisciplinary teamwork among the students, development of socioemotional skills, sexual education, and specific themes important in each stage of the students life. Mental health education and support is an essential part of the Peterson comprehensive learning curriculum, and it begins with our youngest students. Psychologists and teachers also work closely together to help prevent bullying, develop the child's self esteem, and address any socio-emotional issues.

We also have an emotional wellbeing Program imparted once a week, **Cloud9world** for Kinder 3 students and **Second Step** for Prefirst students. These programs help recognize one's emotions and learn the appropriate tools to control them. They include a social area (such as peer-to-peer interactions), problem solving, and sensibilization through the creation of community projects. These modules are complemented with a bullying prevention and a child protection program.

During the school year, we offer different conferences for parents and students related to the development of healthy parenting skills and other topics regarding the student's progress and necessities.





Technology

The Peterson Schools have always been at the forefront of technological innovation. Our preparedness and investment in technology allowed us to smoothly transition to various modalities, and has awarded us recognition as a Google Transformation Center. As the first Google Certified School outside the U.S. and U.K., our students and faculty have developed technological skills of adaptability and proficiency that are beneficial in the following areas:

- Smooth transition to online education when needed (i.e. pandemic).
- Flexibility in integrating technology seamlessly to most STEAM and Social Science courses.
- Digital citizenship. Developing the tools to understand and take on real challenges and digital dilemmas that students face today, giving them the skills they need to succeed as digital learners, leaders, and citizens of tomorrow.

Our classrooms are equipped with the following devices depending on the student's grade level:

- Chromecast, Apple TV, MacBooks, iPads, chromebooks, projectors, and foldable screens.

Our Faculty

9:1



We have a ratio of 9:1 student to faculty ratio, composed of both national and international experts. All the personnel leading our classrooms are certified Montessori guides.





Physical Education

The Physical Education Department is designed to contribute to the well-rounded education of our students through a focus on health, sports, and recreation. Our purpose is to foster the students' physical, mental, and social development, as well as to promote a healthy lifestyle by developing positive attitude, collaboration, teamwork, and a sense of discovery.

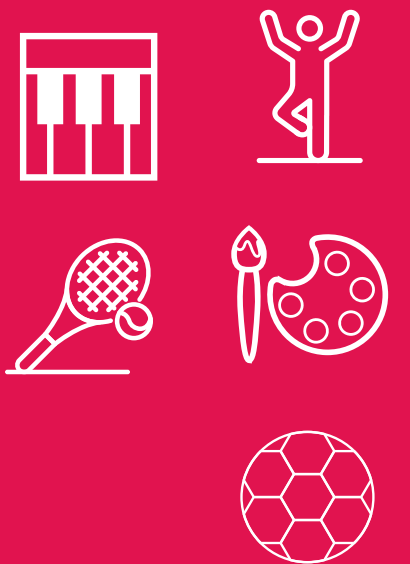
We work with our psychomotor program to impact our youngest students in their motor achievements, focusing on their motor skills such as locomotion, coordination and balance.



Afterschool

A unique program where students are engaged in various experiences to complement their education. At the Peterson Schools we know that the learning process is not limited to the classroom. Additional experiences enrich their multifaceted growth stages based on activities that foster teamwork, leadership, the development of their self-esteem, proactivity, and discipline.

These are some of the extracurricular activities that we offer: Violin, Ballet, Football, Molding with plasticine and others. These activities are available starting in Kinder 1.



More than **4** activities
in our campuses



A Caring and Diverse Community

The Peterson Schools are much more than just a school, we are a community. Our goal is to come together to support our institution’s yearly projects, as well as other external organizations as part of our social impact program. We wish to empower our community members to be positive agents of change through various projects, including the Escuela Promesa monthly recycling campaign, the Vikings United initiative, and the Sharing & Appreciating Winter Basket Campaign, and our Viking Impact monthly newsletter amongst many others.

“My school is my family”.

— Matheus Araujo, Lomas Pre-First student.





School Hours

CB, K1 y K2: 9:00 a.m. a 1:00 p.m.

K3: 8:00 a.m. a 1:00 p.m.

Pre-first: 7:50 a.m. a 2:00 p.m.

Afterschool

K1-K3: 1:00 p.m. a 2:00 p.m.

Pre-first: 2:00 p.m. a 3:00 p.m.

Facilities

Payments (in mexican pesos)

Initial payment before Prefirst:

\$49,000.00MXN (discount apply in second child)

Enrollment fee:

\$27,000.00MXN

Monthly tuition (10 months):

\$13,000.00MXN

Admissions

For further information please contact our admissions office (admisiones_lomas@peterson.mx) or visit our website.

The Peterson Schools have a nondiscrimination policy for employment and educational programs/activities. We prohibit discrimination against our students, applicants and employees based on race, color, sex, gender identity, religion, creed, age, national origin or ancestry, sexual orientation, disability or different ability, marital status, parental status, pregnancy, military status, political activities/affiliations, or other unacceptable reasons.

Peterson Schools
Lomas Campus

Monte Himalaya 615, Lomas de Chapultepec, Miguel Hidalgo,
11000 Ciudad de México, CDMX
www.peterson.edu.mx